



ESTD. 2016 ... BORN 1842

WITHIN EBERLY you’ll discover a beautiful dining room offering contemporary American cuisine, a welcoming study, a rooftop terrace overlooking downtown, and our crown jewel, the historic Cedar Tavern bar of Greenwich Village in New York City.



Eberly is full of depth and intrigue and warrants exploration from early morning to late at night. We invite you to explore our diverse private dining options and unique atmospheres. Eberly offers flexibility to be creative with designing your event. We host all kinds of events including rehearsal dinners and receptions, meet ups, private dinners, corporate events and many more.



AMENITIES

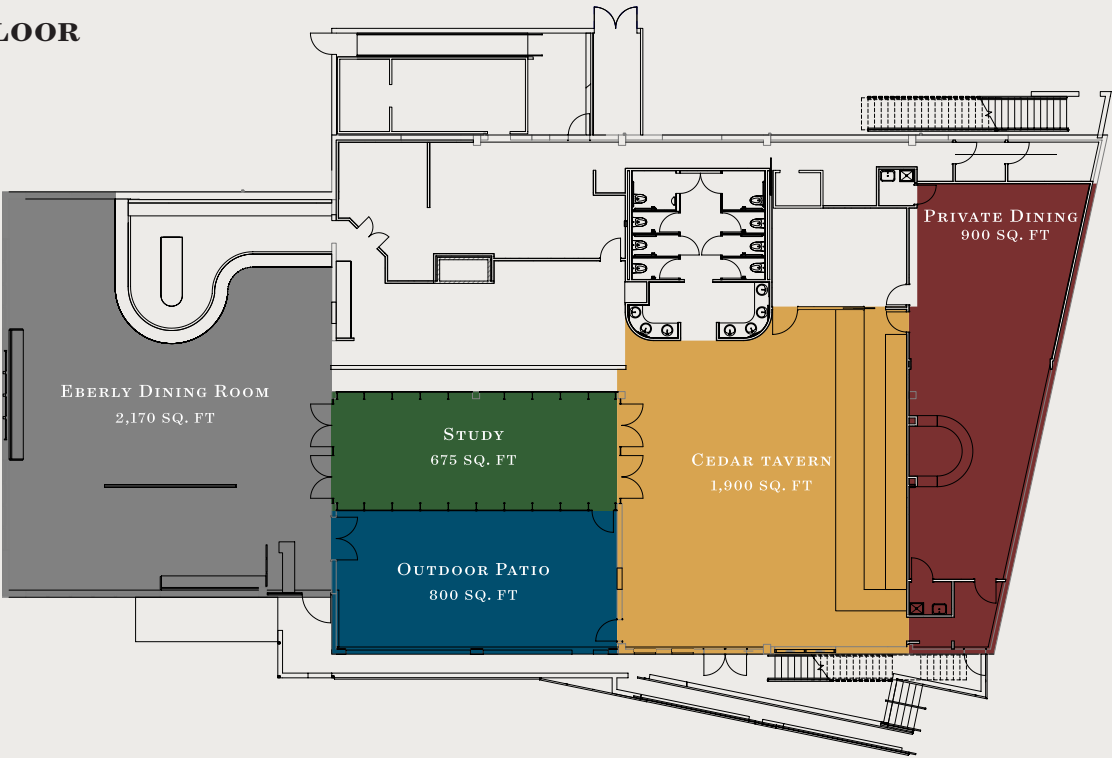
- Event Manager for the duration of your event
- Onsite catering & menu customization
- ADA Men’s and Women’s Facilities
- Multi space options
- Secure guest Wifi
- A/V Capabilities
- Valet Services
- &
- many more.

CAPACITIES	SEATED	STANDING	SQ. FT
EBERLY DINING ROOM	80	125	2,170
STUDY	38	50	675
OUTDOOR PATIO	40	50	800
CEDAR TAVERN	55	125	1,900
PRIVATE DINING	12-40	60-75	900
ROOFTOP TERRACE	150	250	3,100



ESTD. 2016 ... BORN 1842

MAIN FLOOR



ROOFTOP

